

# Oldfield Primary School

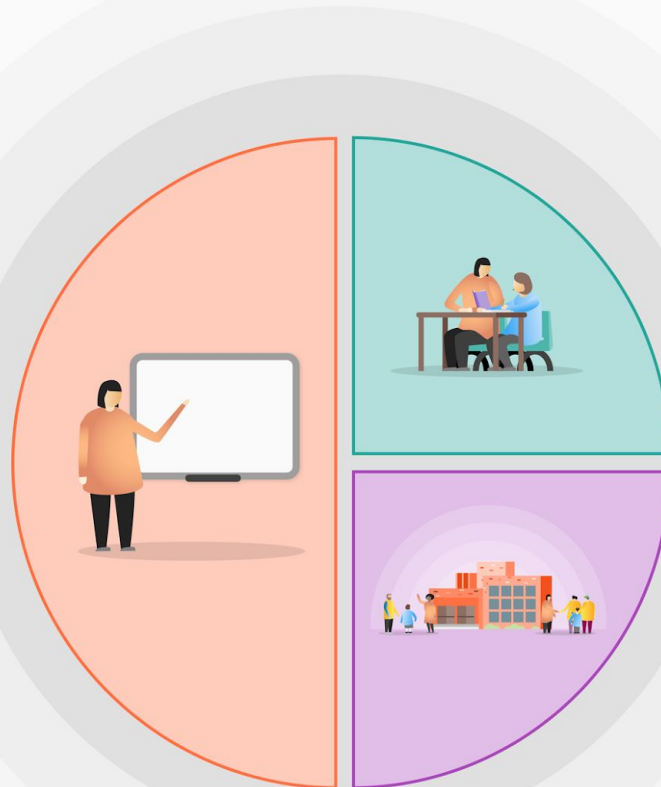
## Pupil Premium Tiered Model

Oldfield Primary School is dedicated to providing a quality education for all. Our priority is to ensure that our whole-school ethos, alongside Quality First Teaching, creates a climate where our children have the opportunity to thrive.

With targeted support and wider strategies in place, every child has the opportunity to reach their highest potential

### 1. Whole School/Teaching

- Teaching staff trained in 'Maths No Problem' Maths Mastery approach.
- Head is a Maths Hub advocate supporting the 'Teaching for Maths Mastery' approach and delivery at Oldfield and other schools.
- The Literacy Company support teachers to plan all units in line with a mastery approach.
- Subject leaders access training relevant to their role.
- Targeted CPD
- Rigorous phonics programme in place across KS1 and targeted interventions in KS2
- Whole staff training in phonics
- Book analysis to identify areas for development/focus.
- Enquiry based curriculum to encourage interaction, engagement and critical thinking.
- Trauma Informed Behaviour system and approach introduced to promote positive relationships.
- Times Tables Rockstars
- RSE & Health, PSE/SMSC equality based curriculum, fully inclusive and planned for delivery
- My Happy Mind programme for whole school (science of the brain and regulation strategies)
- Zones of Regulation regulation approach used consistently throughout school to support regulation
- No Outsiders delivered throughout school.
- Mentoring and coaching for teachers
- ELSA supervision



### 2. Targeted Academic Support

- Same day maths interventions.
- Phonics interventions
- Reading interventions
- EAL provision (1:1 or small group)
- Coaching and motivational interviewing
- In class, targeted support from Teaching Assistants
- Pupil Progress meetings to identify key pupils in need of support
- Continual feedback loop for targeted support
- Electronic devices to support alternative forms of recording and engaging in learning

### 3. Wider strategies

- Social skills groups, Lego therapy, Sensory diets, life skills,
- Access to quiet areas of the classroom and school
- ELSA support
- PSHE Association programme
- Forest Schools
- Attachment Friendly School
- Buddies
- Play leaders
- Access to before and after school clubs
- Financial support for wider school experiences
- Financial support for music tuition
- Our Ways of Working (Trauma Informed Practice) school
- Passion for Learning nurture
- Family support (TAFs and informal)
- Parenting workshops and direct to support
- Emotionally Based School Non-Attendance approach
- Pivotal behaviour approach
- Snack provision
- Trauma Informed Leads training
- Relationships based approach
- Financial workshops for children